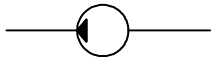
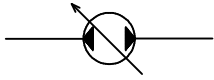


TYPICAL SCHEMATIC COMPONENT SYMBOLS



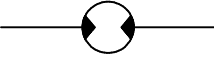
PUMP



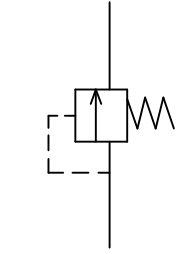
VARIABLE DISPLACEMENT
(PROPULSION) PUMP



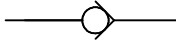
MOTOR



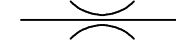
BI-DIRECTIONAL
(PROPULSION) MOTOR



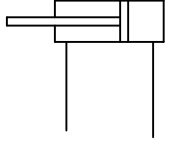
PRESSURE RELIEF
VALVE



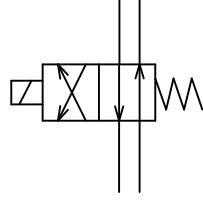
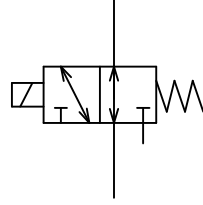
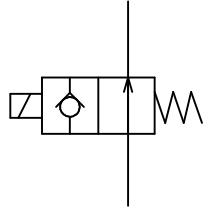
CHECK VALVE



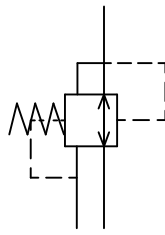
ORIFICE



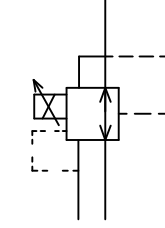
CYLINDER



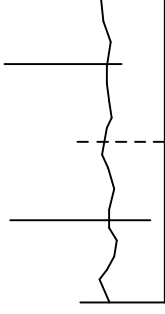
DIRECTIONAL CONTROL VALVES



PRESSURE REDUCTION
VALVE



PROPORTIONAL PRESSURE
REDUCTION VALVE



RESERVOIR